

New Service Available


National Intellectual Disability Memory Service

The National Intellectual Disability Memory Service is committed to improving the early detection of dementia in people with an intellectual disability and offering post-diagnostic supports.

People with an intellectual disability, particularly people with Down syndrome, are at increased risk of developing dementia as they age. Diagnosis is complex, but having an accurate diagnosis is important so people can receive the type of post-diagnostic supports that are appropriate to them.

The National Intellectual Disability Memory Service provides access to a Brain Health Clinic and to specialist assessment and comprehensive diagnostic work-up for memory concerns.

Our multidisciplinary team on-site includes a Consultant Geriatrician, Consultant Psychiatrist, Advanced Nurse Practitioner and Clinical Nurse Specialist. While the service is free, a referral from your doctor, via Healthline, is required to access the service.



"I know that dementia is a worry for people but having an accurate and timely diagnosis means that the person can get the support they need. There is so much we can now do to improve the well-being and quality of life for people living with dementia."

*Prof Mary McCarron
Executive Director*



Trinity College Dublin
Coláiste na Tríonóide, Baile Átha Cliath
The University of Dublin



**Tallaght
University
Hospital**

An Academic Partner of Trinity College Dublin

Ospidéal
Ollscoile
Thamhlachta



Daughters of Charity
Disability Support Services



ciste na
gcuntas díomhaoin
the dormant
accounts fund

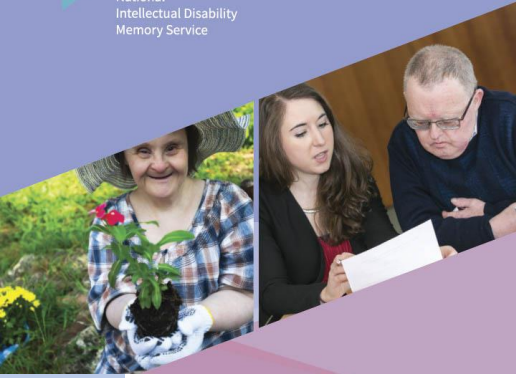


**National
Dementia
Office**



An Roinn Sláinte
Department of Health

With the support of



Executive Director
Prof Mary McCarron



Clinical Director
Prof Sean Kennelly



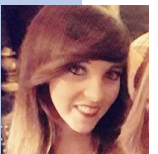
Consultant Psychiatrist
Dr Janette Tyrrell



Advanced Nurse Practitioner
Evelyn Reilly



Clinical Nurse Specialist
Pamela Dunne



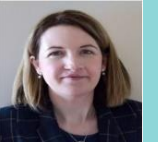
Clinical Nurse Specialist
Cathy McCarthy



Clinic Administrator
Emma Donnelly



*Assistant Professor and
Research Lead*
Eimear McGlinchey



Education & Training Officer
Marianne Fallon



Strategic Development Officer
June O'Reilly

What the Service Offers

The National Intellectual Disability Memory Service can provide:

- Support to people who are worried about memory loss problems and clarification about memory symptoms
- Baseline screening for people with Down syndrome
- Diagnosis, including differential diagnosis
- Information on good brain health along with ways to improve and maintain it
- Treatment information such as the use of anti-dementia drugs
- If a diagnosis is established, this will be discussed with the person/carer in accordance with their wishes
- A formal feedback report to the person's GP or doctor
- Post diagnostic support including information and training/education on living well with dementia
- Access to and enrolment in research studies

A Visit to the Service

As part of a Comprehensive Assessment, the person may be offered some of the following:

- An initial telephone consultation and collateral history and general health profile
- The neuro-psychological assessment, which may involve a very brief investigation of memory, cognition and day-to-day functioning or, alternatively, may be quite in-depth, depending on the level of intellectual disability
- Assessment of heart function (ECG)
- Assessment of general health function, including blood testing
- Assessment of brain function (CT Scan, MRI)

Any information collected feeds into the process of providing an accurate diagnosis of dementia.

National Intellectual Disability Memory Service

Phone: Emma Donnelly at (01) 414 4994

Email: emma.donnelly@tuh.ie or nidms@tcd.ie

Contact via Healthlink